

Histopathology Laboratory



Department of Laboratory Medicine & Pathology

@ pathlabmed@hamad.qa

☎ 4439 1021

Processed by:

Patient and Family Education

@ patienteducation@hamad.qa

☎ 44391495

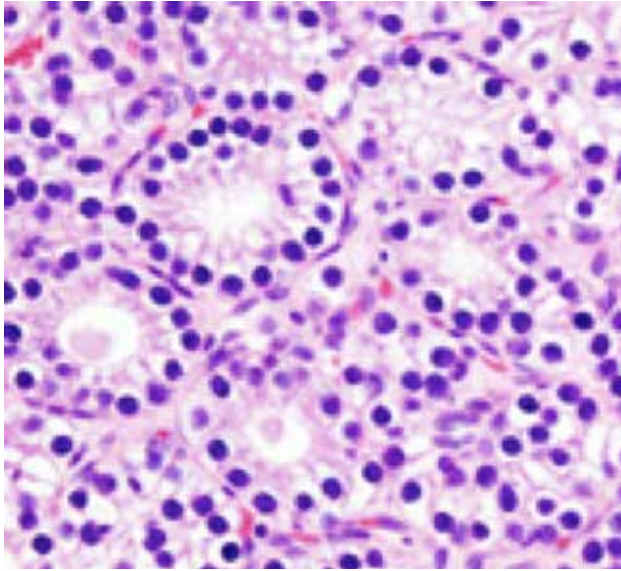
www.hamad.qa



مستشفى حمد العام
Hamad General Hospital

عضو في مؤسسة حمد الطبية
A Member of Hamad Medical Corporation





Histopathology is the science that deals with the study of diseases in different organs and types of tissue. Samples for histopathological examination may be collected in operation theatres, endoscopic units, day surgery units and outpatient clinics depending on the clinical setting, the disease process and the organ involved.

The biopsy is put in a fixative that preserves the tissue immediately after it is taken from the patient and transported to the laboratory where it is processed with thin tissue sections prepared and stained to be examined under a microscope.

Quick pathological examination of tissue may sometimes be necessary while the patient is still on the operation table and is made possible by examining sections of fresh tissue following freezing and section preparation.

Examples of the applications of histopathology:

- Tissue matching between the donor and the recipient in organ transplantation, e.g. kidney transplantation.
- Diagnosis of cancer and its origin, e.g. breast, colon and lung cancer, and identify features of prognostic significance that influence response to therapy and determine the type of therapy.
- Diagnosis of inflammatory conditions of body organs, e.g. skin diseases and inflammatory bowel disease, to optimize treatment and check response to treatment.

