

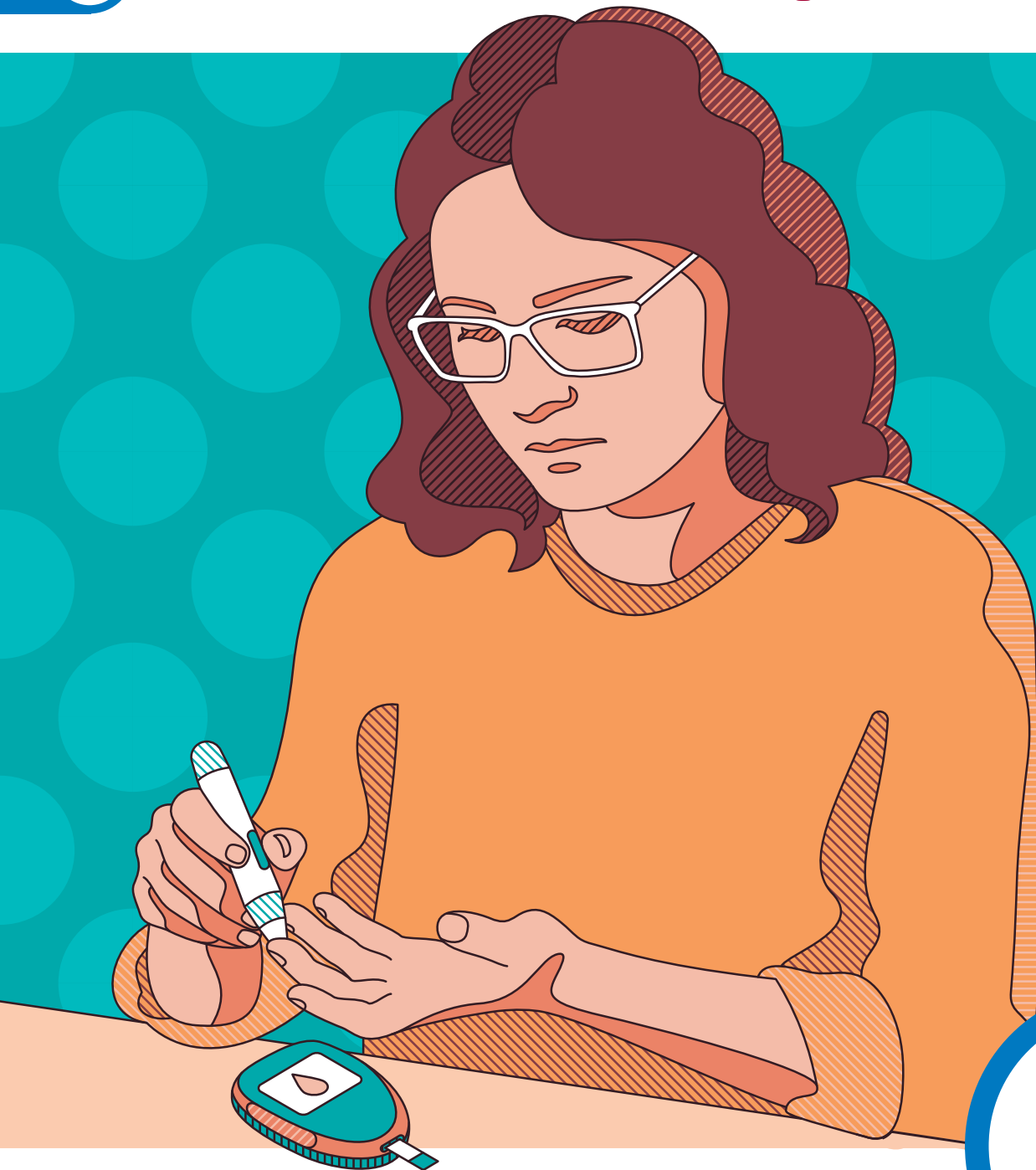


ACCESS TO  
SELF-MONITORING



مؤسسة حمد الطبية  
Hamad Medical Corporation  
Hamad  
HEALTH - EDUCATION - RESEARCH  
صحة - تعليم - بحوث

مؤسسة الرعاية الصحية الأولية  
PRIMARY HEALTH CARE CORPORATION



463  
million

people with diabetes  
worldwide

Blood glucose monitoring is a fundamental component of diabetes care. Many people with diabetes do not have access to the equipment and supplies they need.

# IF NOT NOW, WHEN?

**For more information, please contact us at:**

Diabetes Hotline 16099

Or through the email [dehgh1@hamad.qa](mailto:dehgh1@hamad.qa)

Or WhatsApp Number 33495775



world diabetes day  
14 November