

A Project on Improving Hospital Discharge Planning

INTRODUCTION:

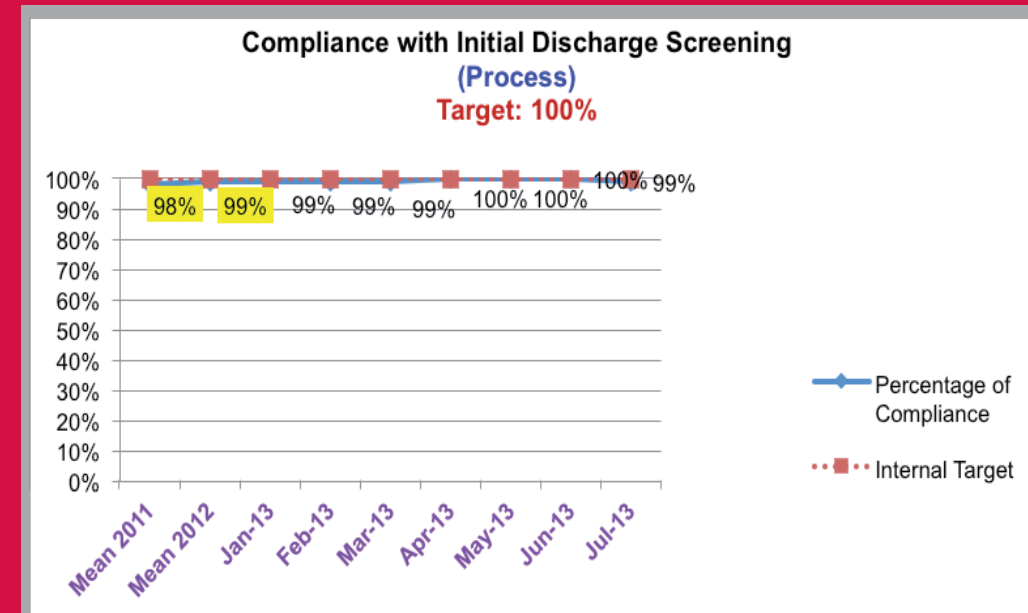
The process should start on admission of the patient by assessing the patient's needs and identifying resources available. The process should incorporate the multidisciplinary approach and involve all the appropriate health team professionals and offer holistic patient care. Effective discharge planning can decrease the chances that a patient is readmitted to the hospital, help in recovery, ensure medications are prescribed and given correctly, and adequately prepare the patients before discharge. It determines the patient's continuing care needs after he or she leaves the hospital setting. Depending on the patient's clinical condition and anticipated length of stay, the discharge planning evaluation should be completed as soon as possible after admission and updated periodically during the patient's stay

METHODS:

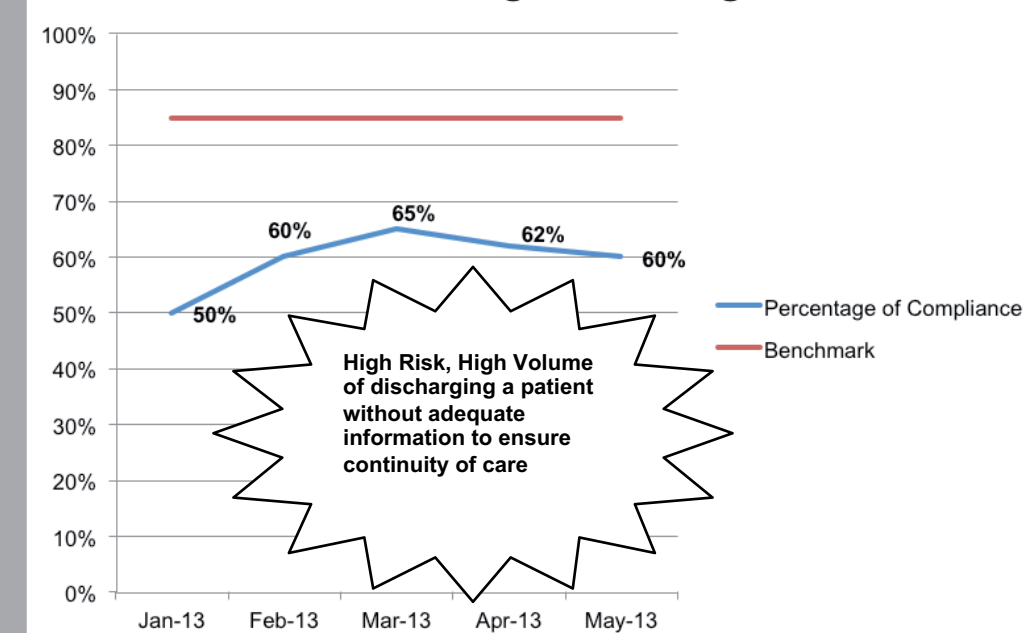
Focus-PDCA used as a quality improvement methodology to improve the data collection on post partum infections

FOCUS

Find: Find a process to improve



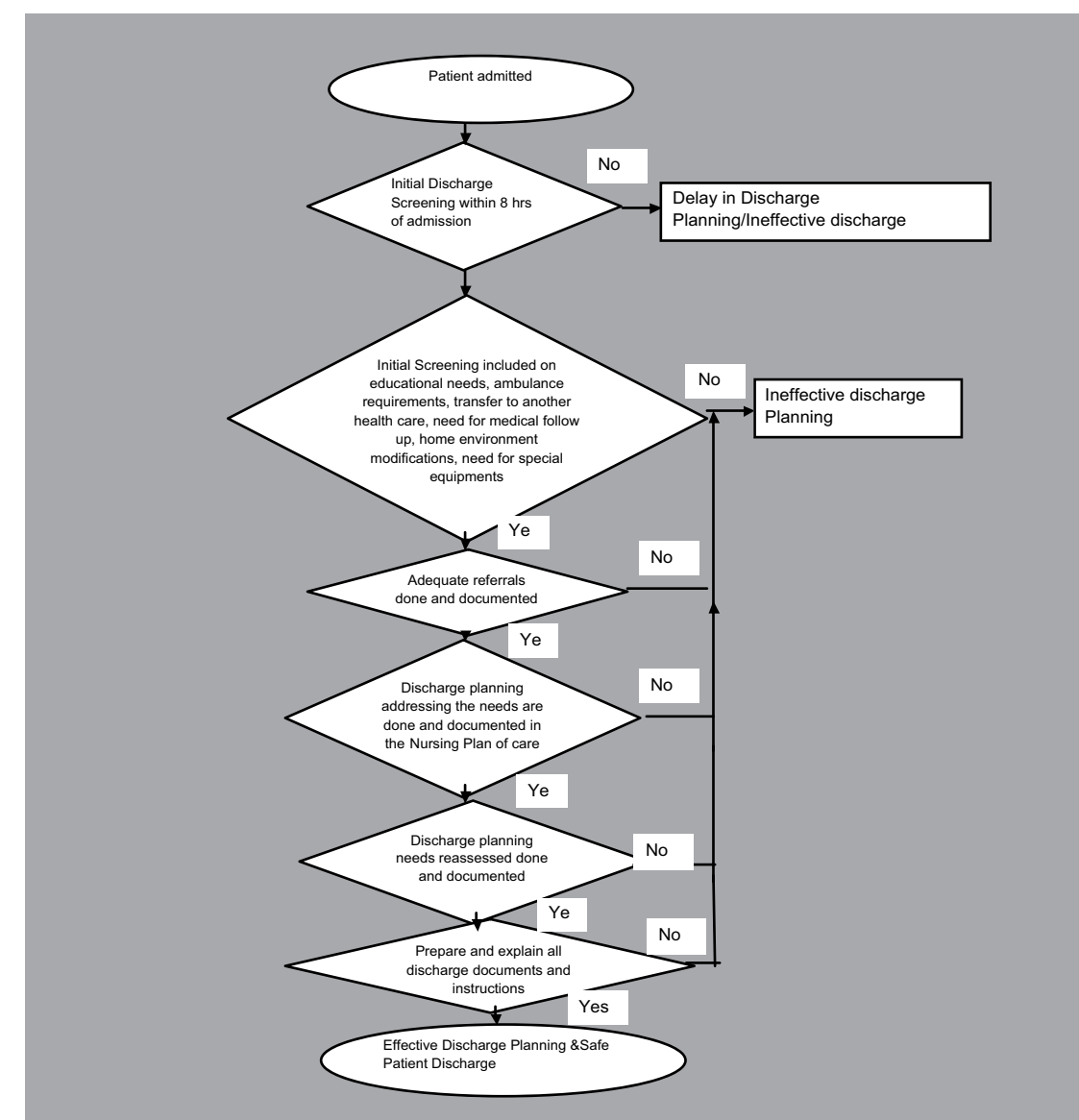
Compliance with Continuous Discharge Screening & Planning



Organize the team :

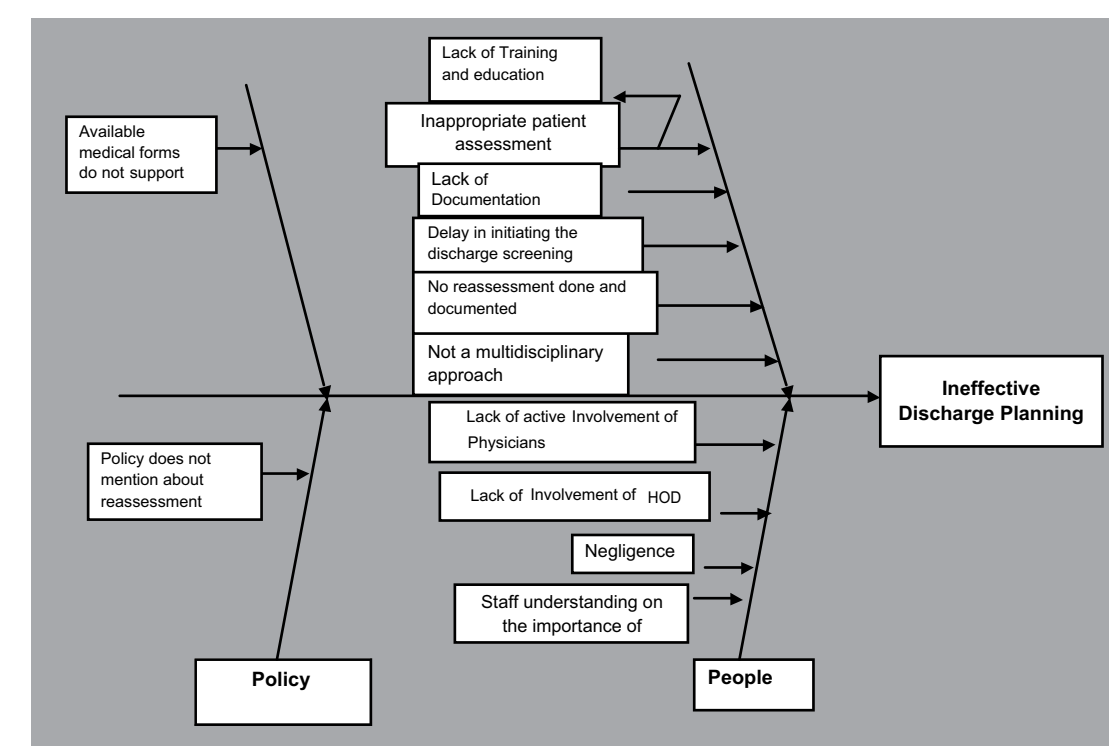
- Staff Nurses (Wards)
- Mrs Hanaan
- Mrs Fatima
- Mrs Sibi
- Mrs Mary
- Ms Rhobie
- Chief Nursing Officer
- Mrs Nada G
- Quality
- Ms Arlene D
- Director QMO-
- Dr Aysha J

CLARIFY the current knowledge of the process



Understand the causes of Process Variation

The various reasons for lack of data to monitor the post partum infections are



PDCA

Plan the improvement

Tasks	Responsibility	Timeline
□ Updating the Nursing daily shift assessment form to include discharge planning needs reassessed	Project Team, QMO Director, Chief Nursing Officer	June 2013
□ Revision of the various Discharge planning needs list	Project Team, QMO Director, Chief Nursing Officer Team	June 2013
□ Education on effective discharge planning and the documentation of the same in the available forms	Project Team	July-Sept 2013
□ Proper supervision and Monitoring of the compliance of the staff	Project Team	Aug-Dec 2013

Act

Check

Do the improvement

Tasks	Responsibility	Timeline	Status
□ Updating the Nursing daily shift assessment form to include discharge planning needs reassessed	Project Team, QMO Director, Chief Nursing Officer	June 2013	Done
□ Revision of the various Discharge planning needs list	Project Team, QMO Director, Chief Nursing Officer Team	June 2013	Done
□ Education on effective discharge planning and the documentation of the same in the available forms	Project Team	July-Sept 2013	Ongoing
□ Monitoring the compliance of the staff	Project Team	Aug-Dec 2013	Ongoing

Select: Select the improvement process

The team reached a consensus that this issue can be solved by the following actions:-

1. Updating the Nursing daily shift assessment form to include reassessment of discharge planning needs.
2. Discharge planning criteria/needs list revised.
3. Education related to the importance of Effective Discharge Planning and documentation of Initial and continuous discharge Planning for all nursing staff.
4. Policy needs to be revised and discharge planning process needs to be clearly explained.